



PRODUCTS

Our range of supply for the field of ready-mix concrete comprises of:

- agitators
- arm protections
- augers
- center shovels
- concrete cast moulds
- concrete discharge hoses
- corner clearing tools
- discharge chutes
- elbow pipes with/without flange, lined
- elevator buckets
- inlet- and outlet funnels
- machine spare parts
- mixer arms and -wings
- mixer liners (bottoms and walls)
- mixing arms
- mixing shafts
- mixing shovels and -shares
- recycling-augers
- scraper buckets
- scrapers (inner- and outer wall scrapers)
- spectacle wear plates and cutting rings
- wear plates

We also have suitable welding and filling electrodes in our range of supply. Of course we can also support and assist you with repairs and modifications.

Please do not hesitate to ask us!

Is your required product not listed here?

We manufacture individually as per your requirements, please contact us. We would be happy to give advice to you!

Fon: +49 (0)2161 / 92790-0
 Fax: +49 (0)2161 / 92790-99
 Mail: vertrieb@contex-gmbh.de
 Web: www.contex-gmbh.de

CONTEX
 HARTMETALL
 VERSCHLEISSTECHNIK
 GMBH

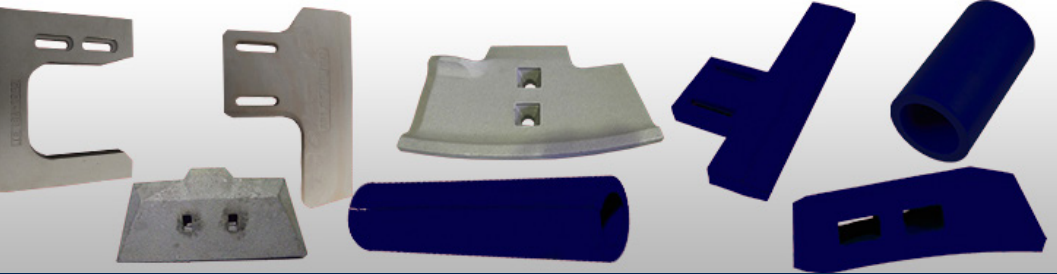
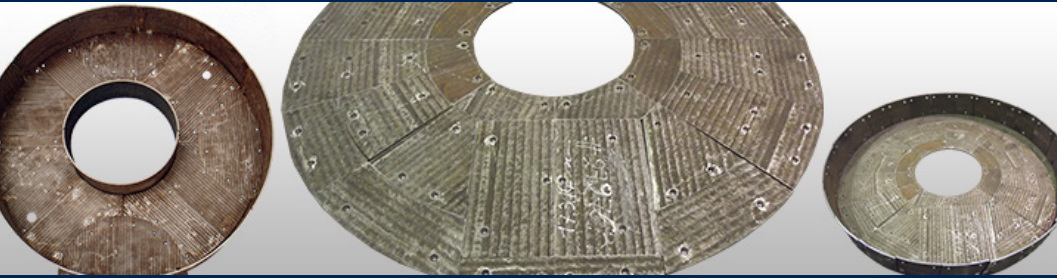
Krefelder Straße 676
 41066 Mönchengladbach
 Germany

Fon: +49 (0)2161 / 92790-0
 Fax: +49 (0)2161 / 92790-99

Mail: vertrieb@contex-gmbh.de
 Web: www.contex-gmbh.de

READY-MIX CONCRETE





Range of Products

PRODUCTION MATERIALS

Individual choice of material custom-made for your requirements.

The right material for your application:

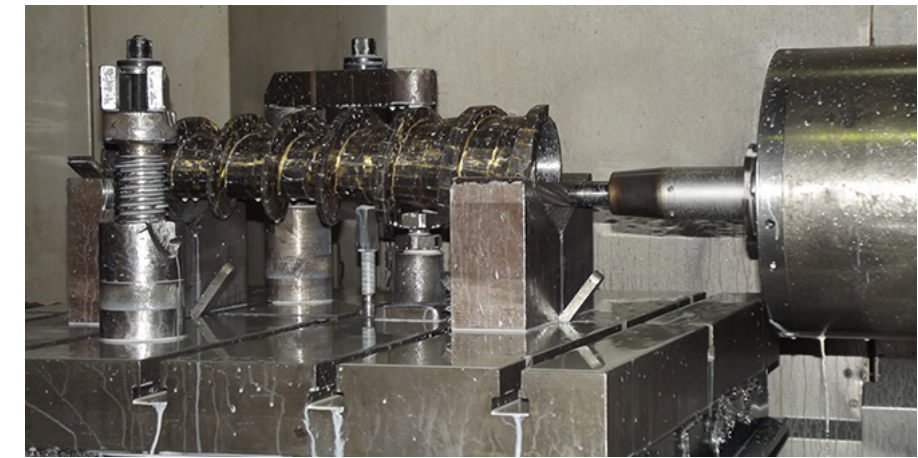
- Hard Metal**
 Our Hard Metal is a compound material comprising of more than 90 % Tungsten Carbide in combination with a metallic matrix. Hard metal is being pressed and sintered to give the material its hardness as well as its wear and corrosion resistance. We offer a range of products made completely of hard metal or with a special hard metal coating.
- Hard Cast**
 Hard Cast is a cast iron alloy with a high contents of carbide. Hard Cast is highly abrasion resistant.
- Stainless Steel**
 Stainless Steel is a steel alloy with a particular level of purity. Stainless Steel has a very smooth surface, it is chemically resistant as well as generally corrosion resistant.
- Alphachrome 7000 (Sandwich Type Steel)**
 Alphachrome 7000 ist eine High-Chrome-Carbide-Alloy for machinery parts subjected to high mineral wear (e.g. fine dust). Due to its high chrome contents Alphachrome is extremely wear resistant.
- Betachrome BC70**
 Betachrome BC70 is a work hardened layered material with a hardness of approx. 64 HRC. This alloy is particularly resistant to high impact and abrasion.
- SX600**
 SX600 is a special steel with a tensile strength of up to 600 Newton. Its advantage in comparison to standard steel is its higher wear resistance.
- CX6000**
 CX6000 is a martensitic steel with a hardness of up to 550 HB. Its hard microcarbides render this material its exceptional wear resistance.

We would be pleased to personally discuss which material is best suitable for your requirements.

PRODUCTION MACHINERY

We carry out all individual production steps at our production facilities in Mönchengladbachs, from construction to final final product, i.e.:

- Chip removal
- Welding
- Warping
- Grinding
- Laser Cutting
- Brazing
- Steel Construction
- Assembling



THE WEAR PROTECTION MANUFACTORY